



High Street,  
Hoddesdon,  
EN11 8BH



39 – 41 Sun Street,  
Waltham Abbey,  
EN9 1EL

## **Museum Education Service Resources available in school for Key Stage 1**

### **Workshops**

#### **Booking information**

- All workshops are delivered by the Education Officer
- They last around 1 hour and can usually be arranged to fit in with your timetable
- All workshops take place in the **classroom** with one class at a time. The Education Officer will move from class to class
- There is rarely any need to rearrange your classroom. The class will either be sitting on the carpet or working in 5 groups at tables. It does help if tables are clear as possible
- To make a booking email [museum@eppingforestdc.gov.uk](mailto:museum@eppingforestdc.gov.uk) or call 01992 564994 and ask for the Education Officer

#### **Cost**

Schools within Epping Forest District and the Borough of Broxbourne

- £45 for the first class / hour then £25 for each additional class / hour on top of this

Schools outside the above areas up to a maximum 20 mile radius from the museum

- £55 for the first class / hour then £25 for each additional class / hour on top of this

Payment will be requested by invoice from Epping Forest District Council approximately two weeks after the workshop.

## **Workshop Topics**

### **Old Fashioned Washday**

The old nursery rhyme, 'Twas on a Monday morning ...' forms the basis of this workshop to help children learn all about the different tasks and tools used to wash clothes a long time ago. A lively interactive workshop where the children get involved both with the singing and the washing using a range of original objects.

Children will be based on the carpet for this workshop, with some chosen to come out and use the objects to complete the washday tasks.

*This workshop uses images projected on to a whiteboard, with original objects including washtub, washboard, washing dolly, mangle, soap, pegs, clothing, slug and flat irons*

### **Toys in the Past**

Ellen Buxton lived locally over 100 years ago. In her diary she drew pictures of her brothers and sisters playing with their favourite toys. Ellen's sketches are combined with real old toys from the museum's collection so children can investigate whether or not the toys Ellen played with over 100 years ago are very different to the toys they play with today.

Children will start on the carpet with some chosen to come and try some toys, finishing with everyone at tables trying a wide selection of old toys.

*This workshop uses images projected on to a whiteboard, with a mix of original and replica items including but not limited to wooden hoops, china doll, cup and ball, whip and top, clockwork toys, wooden toys*

### **Homes in the Past**

Children investigate 'mystery' domestic objects from 100 years ago. They use all their senses of touch, sight, smell and hearing to try and work out what the objects are. They develop their speaking and listening skills as they explain what they think their object was used for and listen to others describing their objects. Finally, looking at all the objects together, we discuss what we use in their place today, and what they can tell us about what life was like in homes 100 years ago.

Children will start on the carpet trying to identify one object. They will then work in 5 groups at their tables trying to identify 5 more objects: there will be one object on each table, which is then passed from table to table.

*This workshop uses all original objects - there will be a chamber pot, washing dolly, oil lamp, slug iron, hot water bottle and carpet beater*

## Victorian Seaside

Ellen Buxton took her diary on her seaside holidays to Cromer with her family over 100 years ago. She describes the fascinating train journeys to get there and the activities she got up to on the beach. We use Ellen's diary to compare what her seaside holidays were like with what ours are like today, and explore the contents of her suitcase to see if the clothes she wore and what she packed were different to what we would pack today.

Children will be based on the carpet for this workshop, with one chosen to come out and dress up as Ellen, and up to 7 children asked to choose an object from her case to try and identify with the help of the rest of the class.

*This workshop uses images projected onto a whiteboard, with replica and original objects including Victorian girl's clothing (corset, crinoline, skirt, jacket, hat) and a parasol, bucket and spade, penny lick, coin, swimming dress, codd bottle, button hook and boot.*

## Great Fire of London

We investigate the story of the Great Fire of London, using Epping Forest District Museum, a Grade II listed Tudor house, as an example of how houses were built at the time to explore the risk of fire. We also examine replica maps from the National Archives showing what London looked like before and after the fire to see what effect it had on the city.

Children work in 6 groups (one group can be based on the carpet) to start with examining the maps. Then they sit together on the carpet looking at images on the whiteboard, with some children being asked to choose an object from the box to investigate the risk of fire in houses at the time.

*This workshop uses images projected onto a whiteboard, with replica objects including a watering pot, and maps of London before and after the fire.*

**'Children loved the opportunity to touch and feel artefacts - with good learning conversations.'**

*Feedback from teacher on Great Fire of London workshop*

## Loan Boxes

### Booking information

- Available to hire for **half a term** at a time
- Boxes are delivered to / collected from your school at the end of each half term
- There will be a mix of original or replica objects depending on the topic
- There are notes on each object with suggestions for cross curricular links where appropriate
- Ideas for using objects in the classroom are included
- A CD of images of objects can be saved onto your own network for future reference
- To make a booking, email [museum@eppingforestdc.gov.uk](mailto:museum@eppingforestdc.gov.uk) or call 01992 564994 and ask for the Education Officer

### Cost

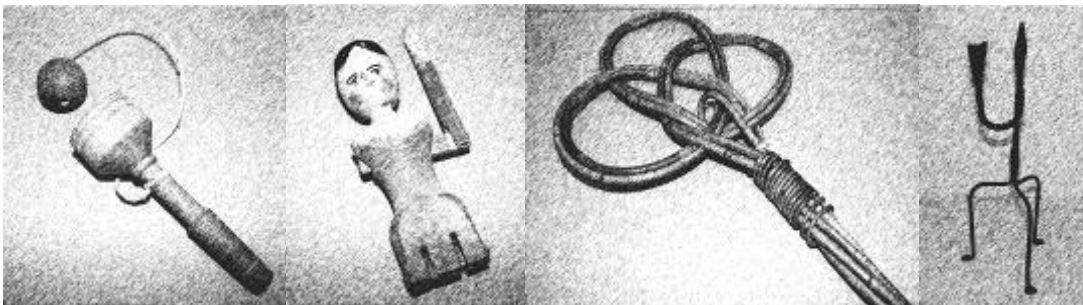
Schools within Epping Forest District and the Borough of Broxbourne

- £45 per half term, or a discount rate of £40 if booked with and delivered on the same day as a workshop

Schools outside the above areas up to a maximum 20 mile radius from the museum

- £55 per half term, or a discount rate of £50 if booked with and delivered on the same day as a workshop

Payment will be requested by invoice from Epping Forest District Council approximately one to two weeks after the workshop.



## **Loan Box Topics**

### **Toys in the Past**

A selection of replica and authentic toys from the past 100 years, perfect for trying out to experience just how children played in the past! There is also a selection of historical photographs and drawings showing Victorian children at play, and oral history recordings from the early 20th century of memories of toys and games played by children in the district.

*Contains both original and replica objects*

### **Homes in the Past**

A range of objects from the last 100 years show how kitchen and other home gadgets have changed over time. This box will aid a very practical understanding of what it was like to live in a house a long time ago, by enabling pupils to try working with different objects to carry out a range of household tasks the hard way!

*All original objects*